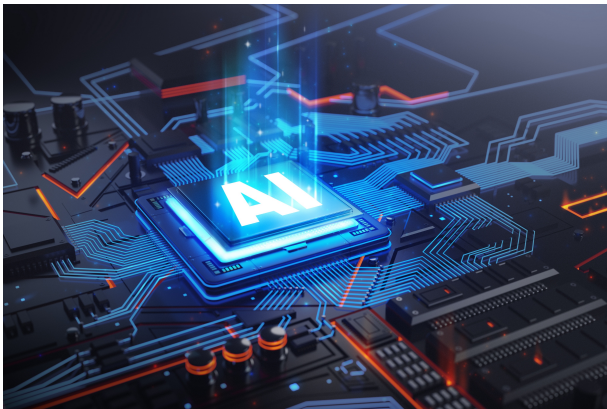


IP MARKETPLACE

CONNECTING INNOVATION TO YOUR BUSINESS

TECH OFFER

A Value Driven Machine Learning Module For Cyber Physical Human Systems



▶ MORE INFORMATION

MEGA-TREND

- SMART Cities and SMART Infrastructure
- RoboSlaves
- Innovating to Zero
- E-Mobility
- Healthcare
- Information and Communication Technologies

TECHNOLOGY READINESS LEV(TRL)

- TRL 3

PATENT/ GRANTED NUMBER

- PI2017704203

▶ TECHNOLOGY OVERVIEW

The present invention discloses a cyber physical human system comprises of an edge based artificial intelligence module, configured to gather data and provide immediate actions related to a current situation encountered; and, a cloud based artificial intelligence engine, configured to store trained data for past situations encountered, characterized in that, a Kernel Bayesian Reciprocal Mapfield performs mutual adaption and accommodation of the trained data to the immediate actions of the

CONTACT US!

Dr. Lee Ching Shya, RTTP

UMCIE Business Officer

Email: leecs@um.edu.my

Phone: +603 – 7967 7352 / 013-2250151

current situation encountered based on at least one adaptive resonance techniques such that an optimized action is generated to be executed for the current situation encountered.

CONTACT US!

Dr. Lee Ching Shya, RTTP

UMCIE Business Officer

Email: leecs@um.edu.my

Phone: +603 – 7967 7352 / 013-2250151